



Heaven and Earth Designs

The Long Sleep

Chart No: HAE/CV001

By Michele Sayetta

Artwork by Christophe Vacher



Finished Design Size 300W by 600H (12WX 24H inches on 29ct fabric)

Heaven and Earth Designs

655 10th Ave SW

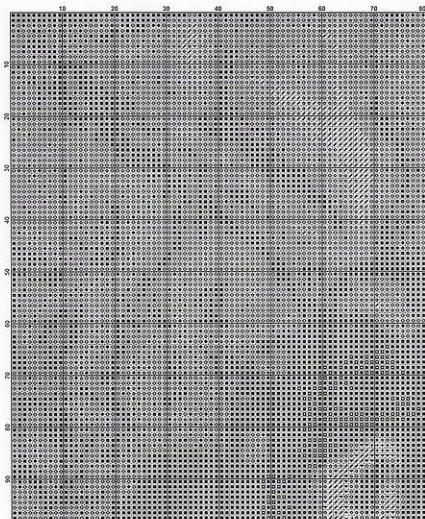
Rochester, MN 55902

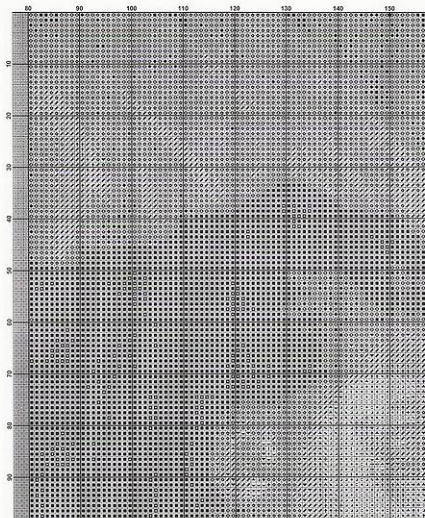
507-280-8249

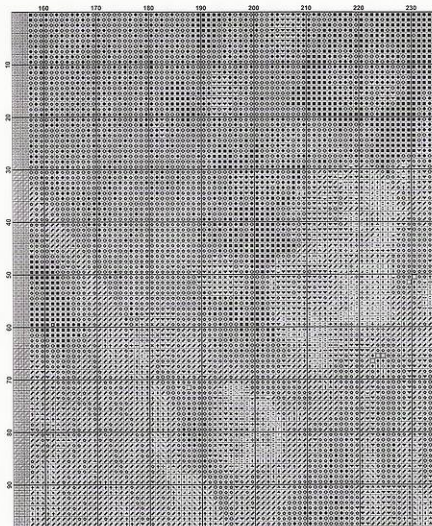
www.heavenandearthdesigns.com

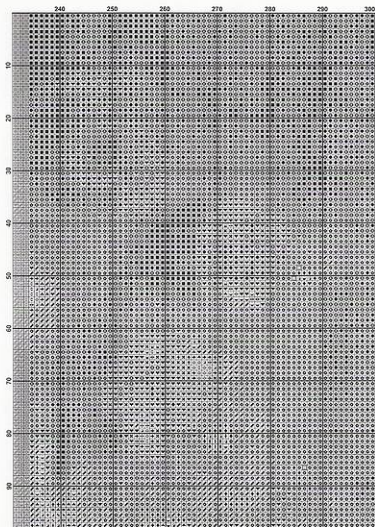
Copyright Heaven and Earth Designs

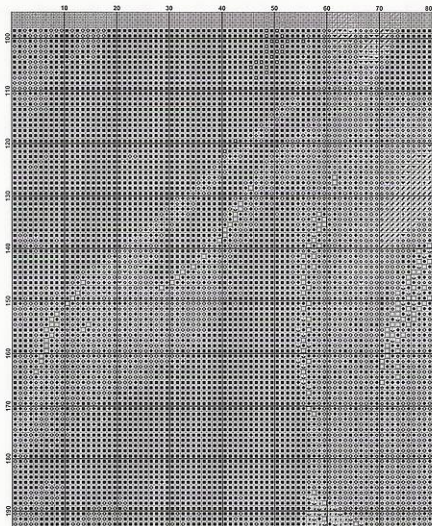
Copyright -Christophe Vacher

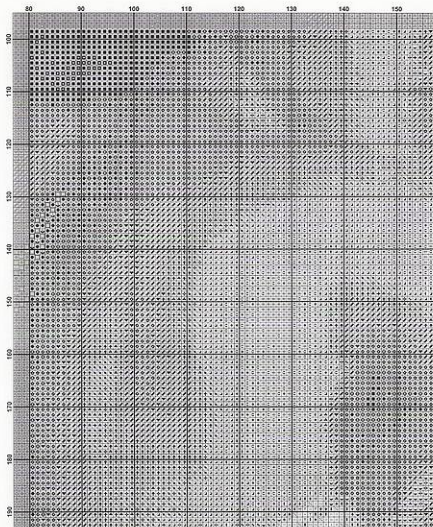


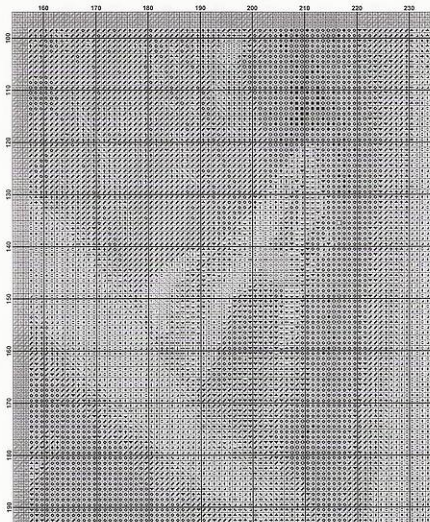


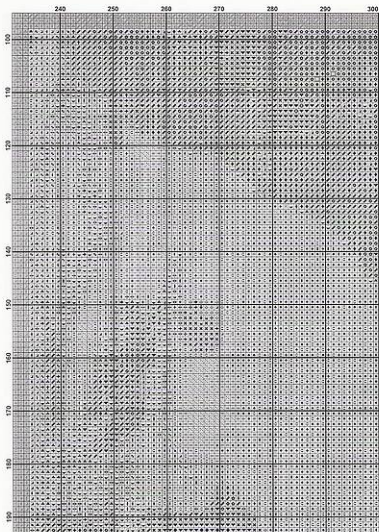


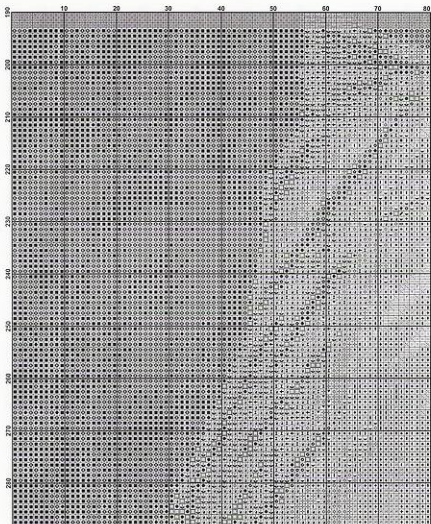


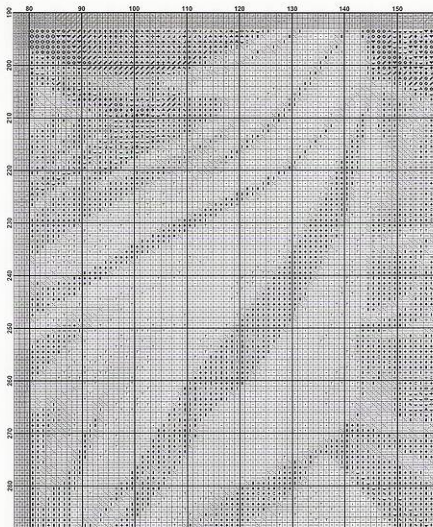


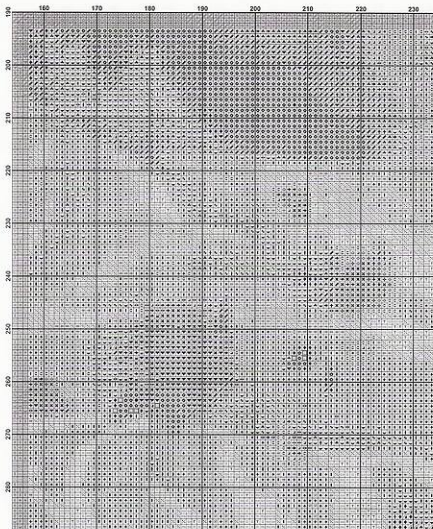


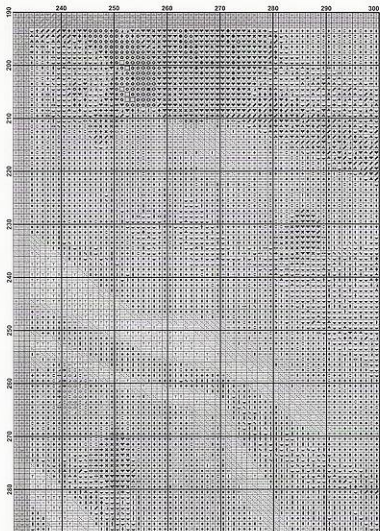


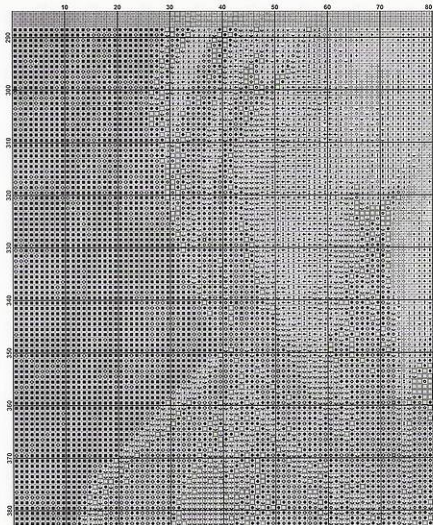


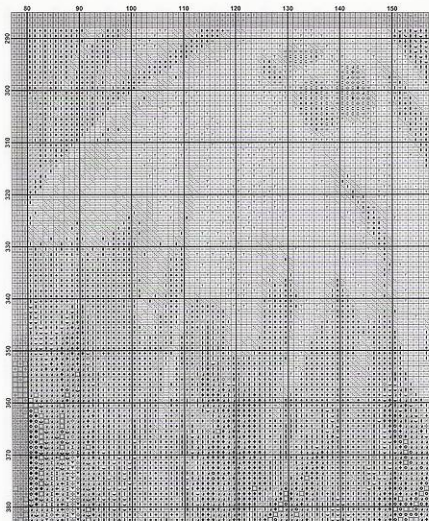


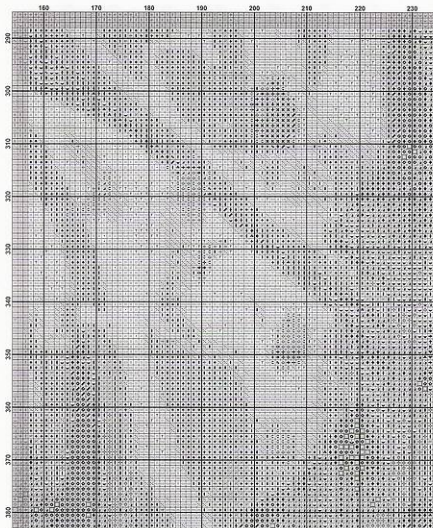


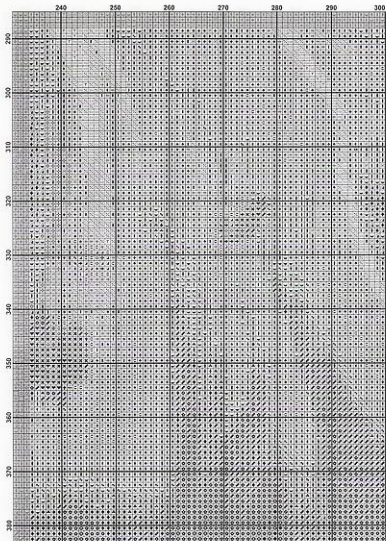


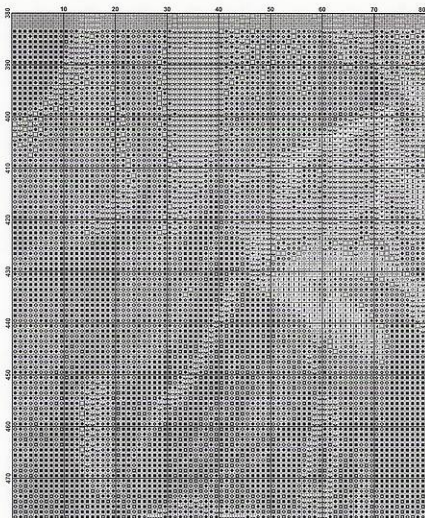


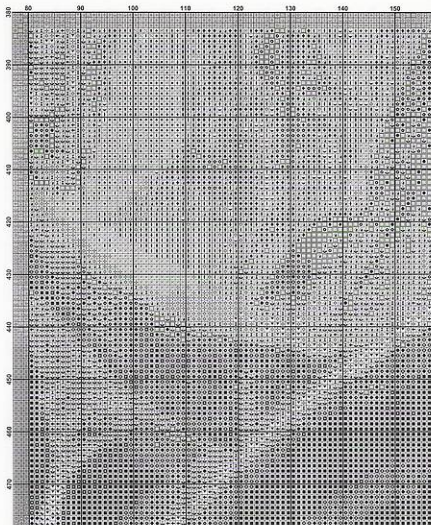


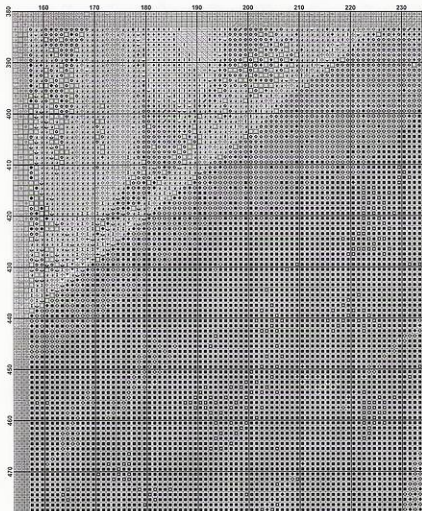


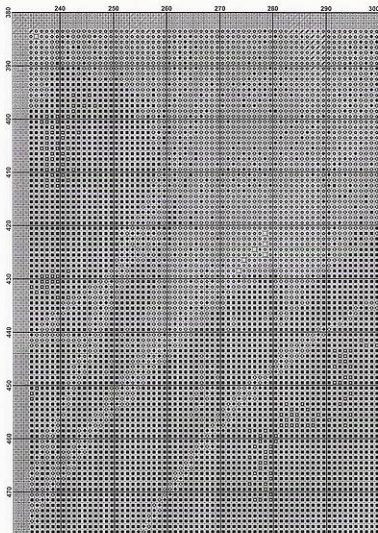


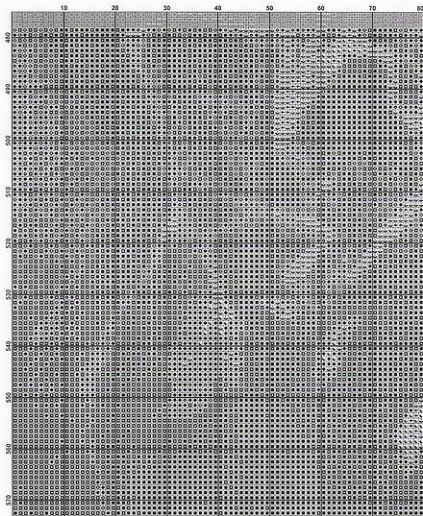


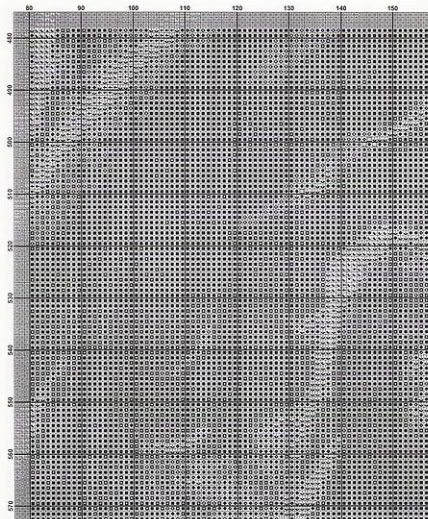


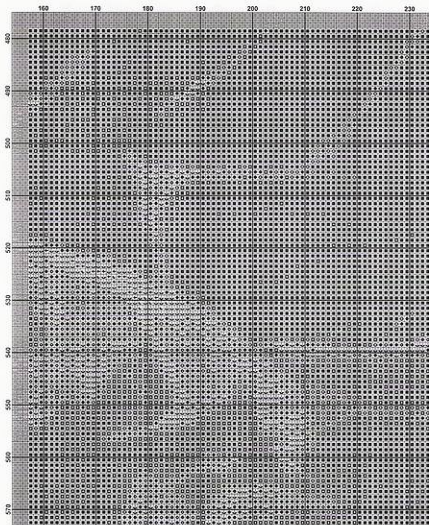


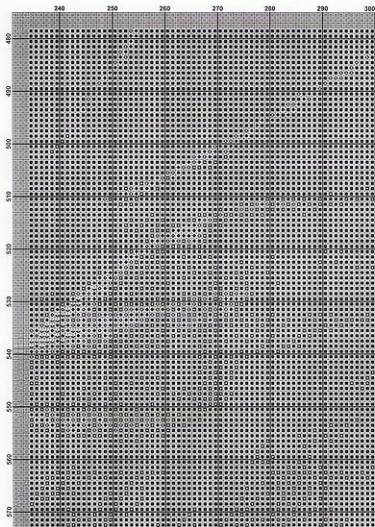


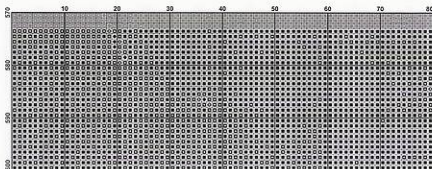


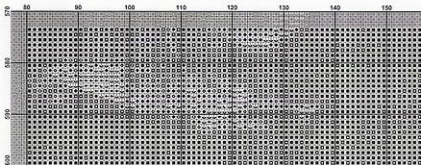


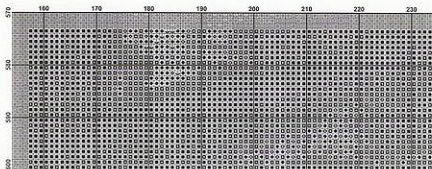


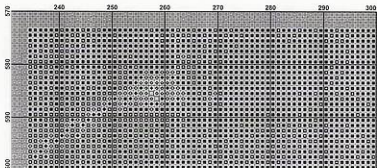
















































Pattern Name: The Long Sleep - Vacher
 Designed By: Michele Sagetta
 Company: Heaven and Earth Designs
 Copyright: 2005
 Fabric: Linen or Everweave 25, White
 300w X 600h Stitches
 Size: 25 Count, 12w X 24h in

Flora Used for Full Stitches:

Symbol	Strands	Type	Number	Color
	2	DMC	130	Dusty Rose-LIL VYDK
	2	DMC	154	Grape-VYDK
	2	DMC	500	Mahogany-VYDK
	2	DMC	501	Mahogany-MD
	2	DMC	510	Black
	2	DMC	517	Pewter Gray
	2	DMC	517	Salmon-VYDK
	2	DMC	555	Terra Cotta-DK
	2	DMC	556	Terra Cotta-MD
	2	DMC	600	Mahogany-DK
	2	DMC	607	Desert Sand-DK
	2	DMC	615	Pewter Gray-DK
	2	DMC	616	Steel Gray-DK
	2	DMC	620	Hazelnut Brown-DK
	2	DMC	654	Brown-LT
	2	DMC	656	Tan
	2	DMC	657	Tan-LT
	2	DMC	658	Christmas Red-DK
	2	DMC	659	Ash Gray-VYLT
	2	DMC	652	Desert Sand-LIL VYDK
	2	DMC	758	Tan-VYLT
	2	DMC	779	Cocoa-DK
	2	DMC	780	Topaz-LIL VYDK
	2	DMC	801	Coffee Brown-DK
	2	DMC	814	Garnet-DK
	2	DMC	825	Navy Blue-DK
	2	DMC	840	Beige Brown-MD
	2	DMC	869	Hazelnut Brown-VYDK
	2	DMC	900	Burnt Orange-DK
	2	DMC	902	Garnet-VYDK
	2	DMC	919	Red Copper
	2	DMC	950	Antique Blue-DK

Symbol	Strands	Type	Number	Color
 	2	DMC	954	Black Avocado Green
 	2	DMC	958	Coffee Brown-LIL DK
 	2	DMC	959	Navy Blue-VY DK
 	2	DMC	965	Tawny
 	2	DMC	961	Tawny-LT
 	2	DMC	975	Golden Brown-DK
 	2	DMC	976	Golden Brown-MD
 	2	DMC	3051	Mocha Brown-VY DK
 	2	DMC	3055	Yellow Beige-DK
 	2	DMC	3571	Black Brown
 	2	DMC	3721	Shell Pink-DK
 	2	DMC	3768	Gray Green-DK
 	2	DMC	3772	Desert Sand-VY DK
 	2	DMC	3787	Brown Gray-DK
 	2	DMC	3799	Powder Gray-VY DK
 	2	DMC	3856	Mahogany-LIL VY LT
 	2	DMC	3860	Cocoa
 	2	DMC	3862	Mocha Beige-DK

The Long Sleep
By Michele Sayetta
Artwork by Christophe Vacher

Materials List

- 1 DMC 50 Skeins Refer to inside sheet

This chart pack, or any part of this design or chart may not be reproduced in whole or in part in any form without the written permission from Michele Sayetta.

©Copyright Heaven and Earth Designs.
©Copyright Christophe Vacher

Instructions

The model for The Long Sleep is stitched over 1 on 25ct, Dublin Linen . You may use one or two strands of floss, depending on your preference for coverage.

We also suggest using a #28 needle when working over 1 on 25ct.

This is a large project that will offer many hours of stitching pleasure.

We thank you for purchasing this design and
We welcome any questions or comments
that you may have.